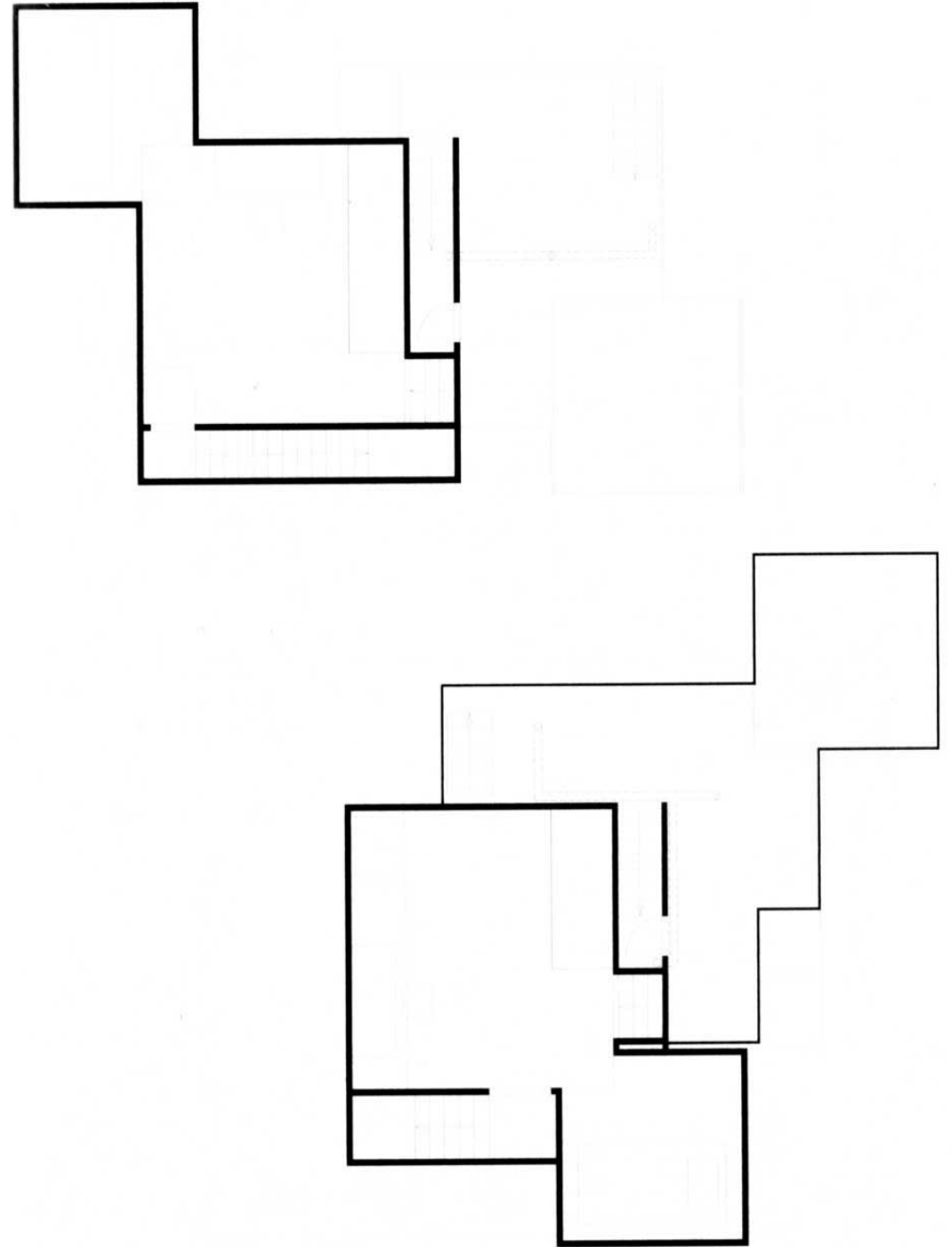
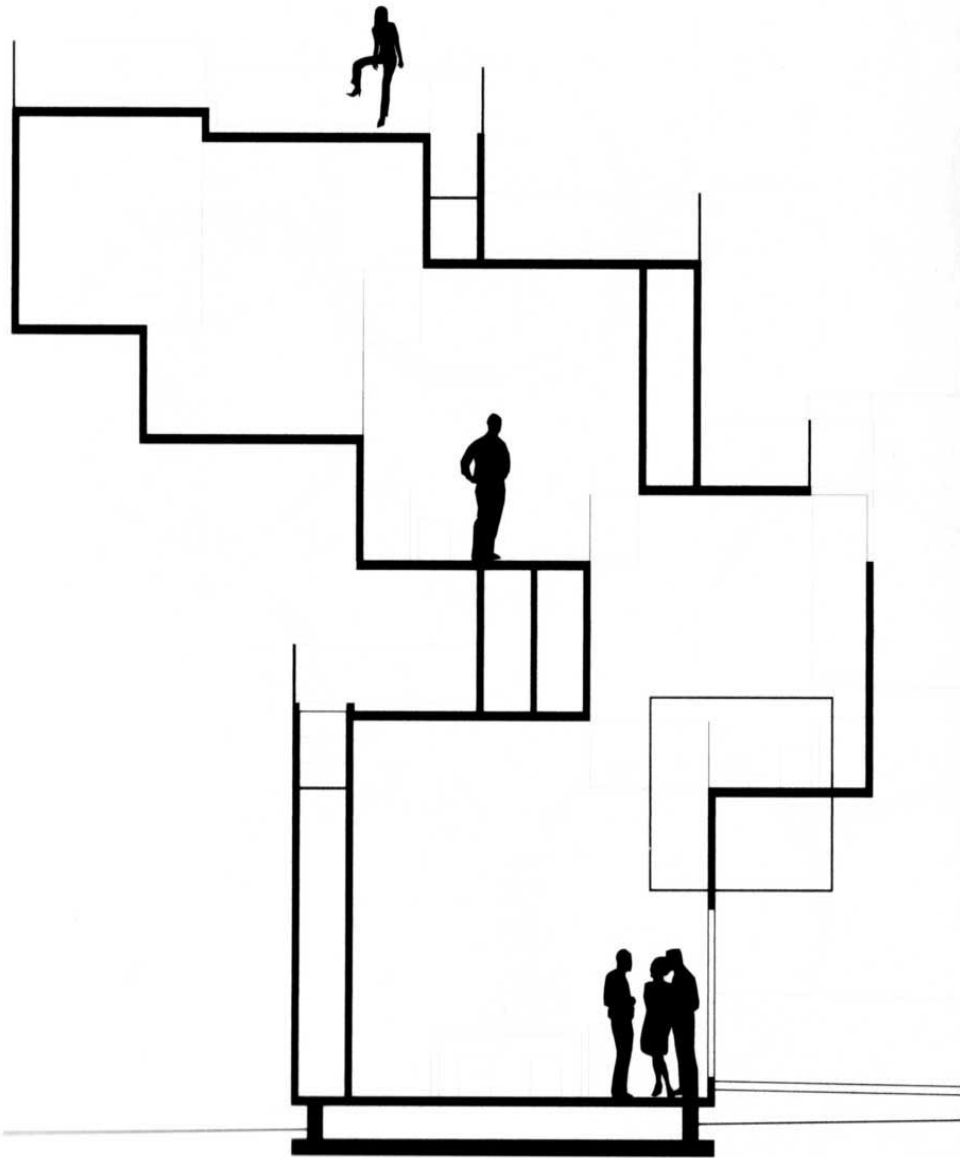
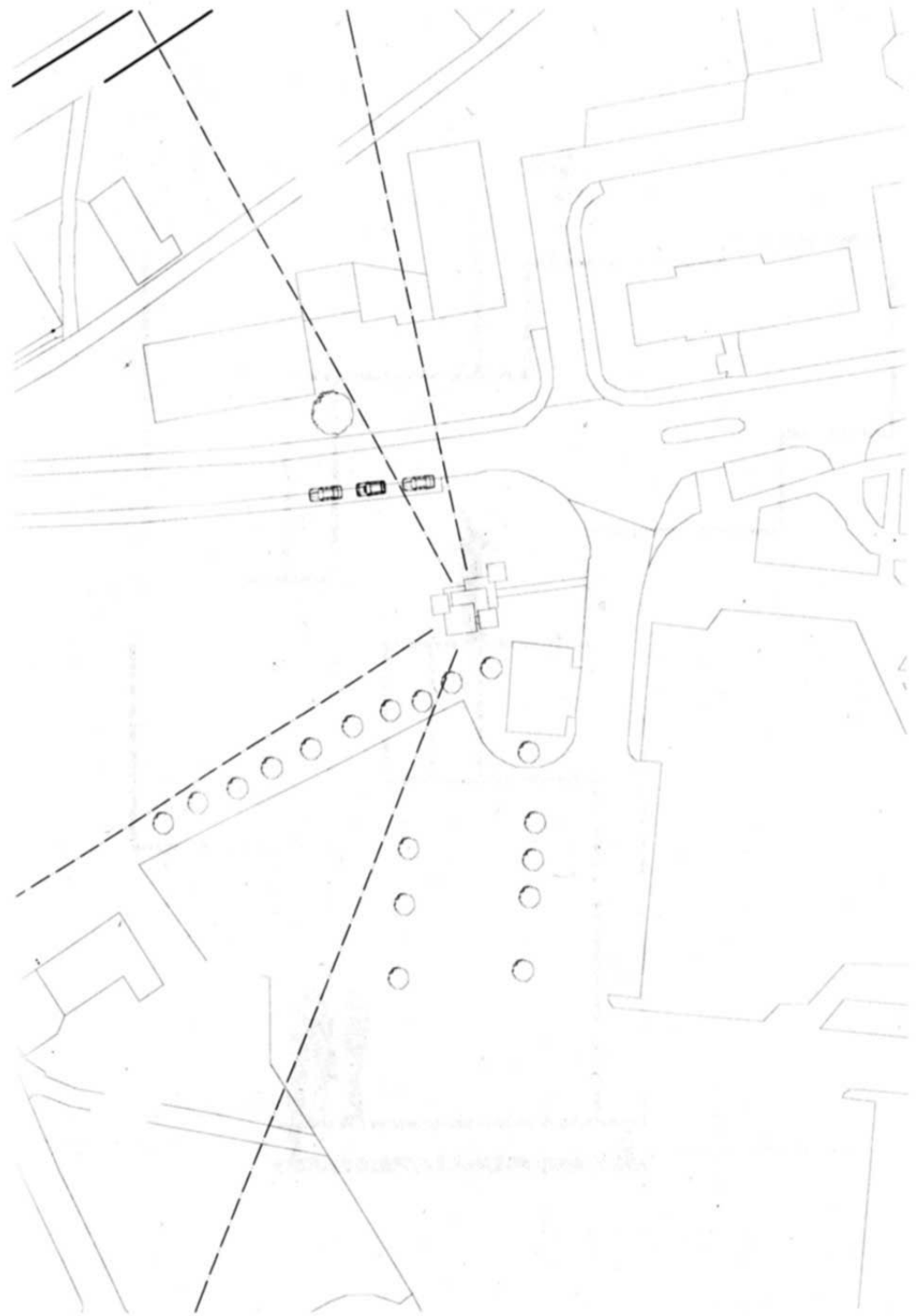


2008/2009

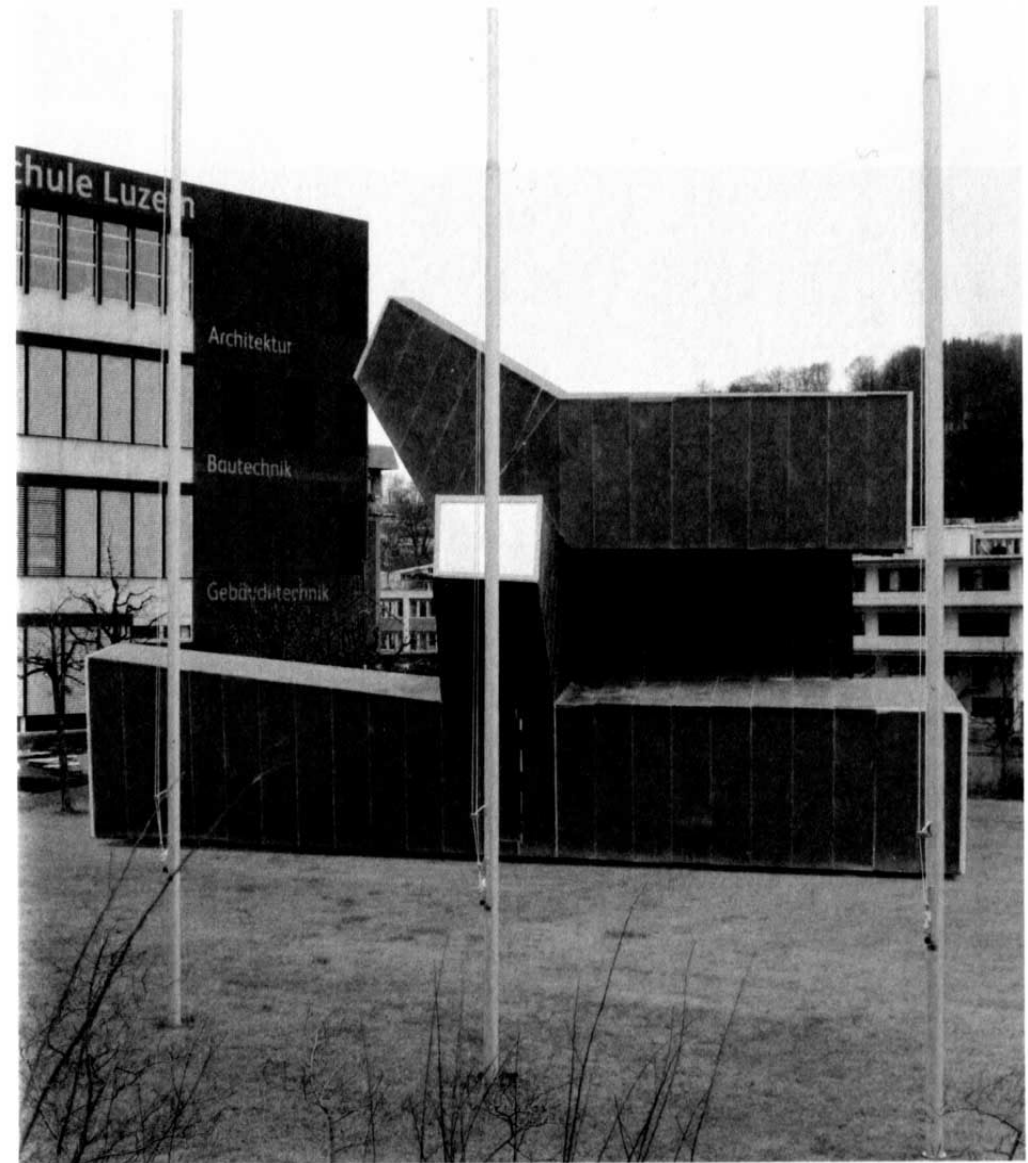
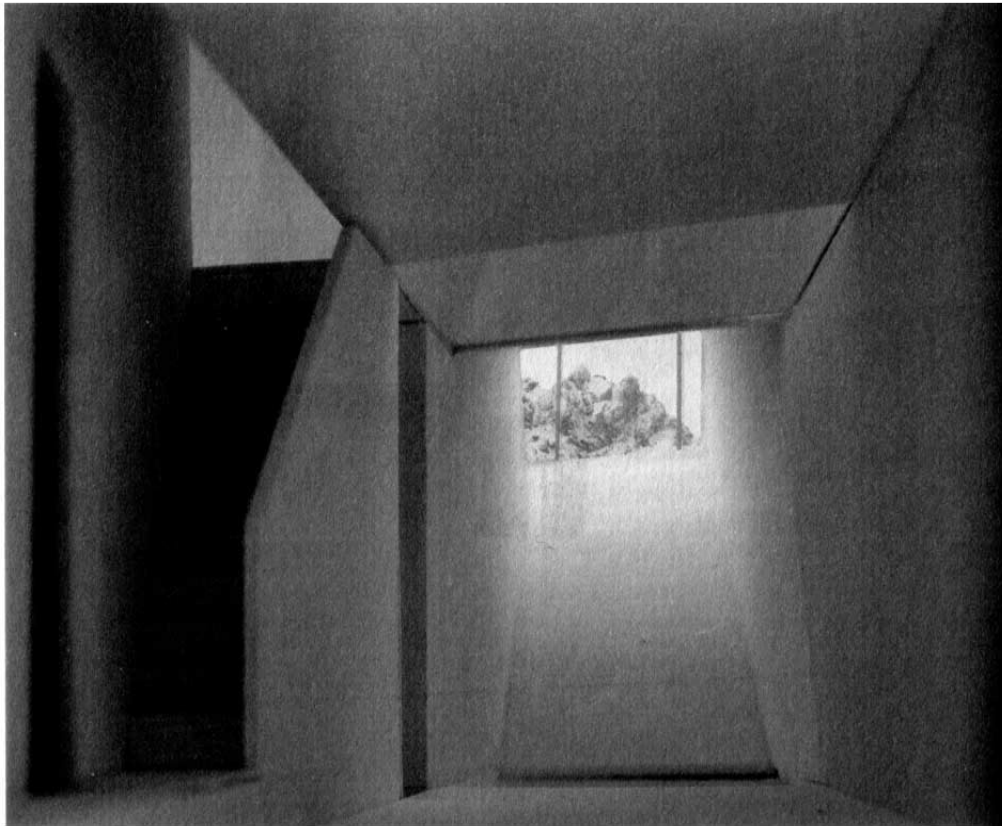
Jahrbuch HSLU T&A
Abteilung Architektur
Studentenarbeiten bei Martin Saarinen

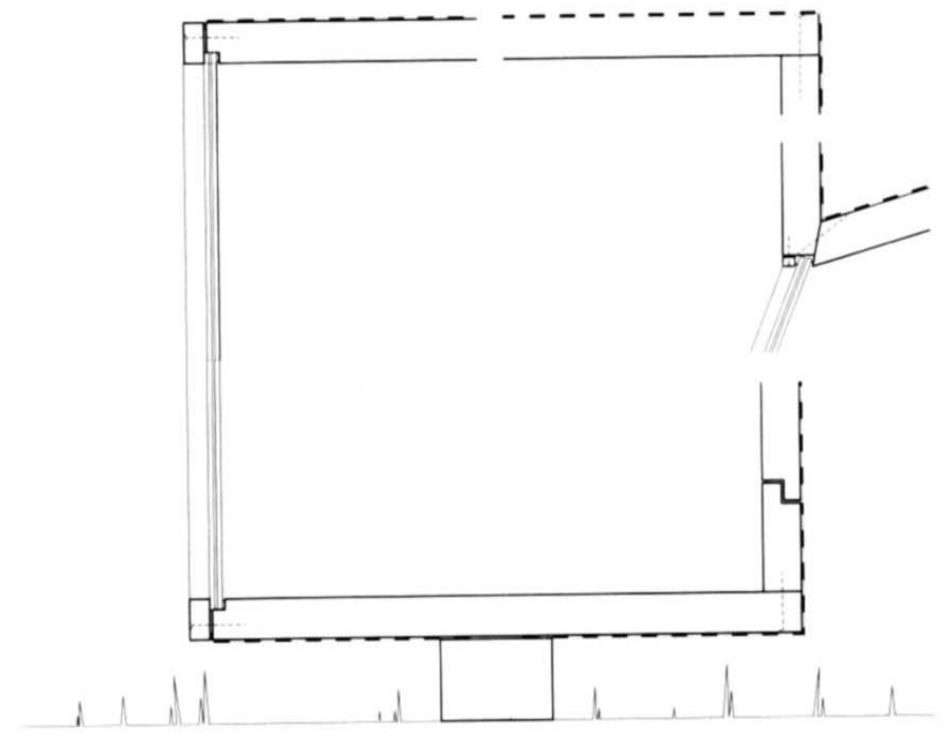
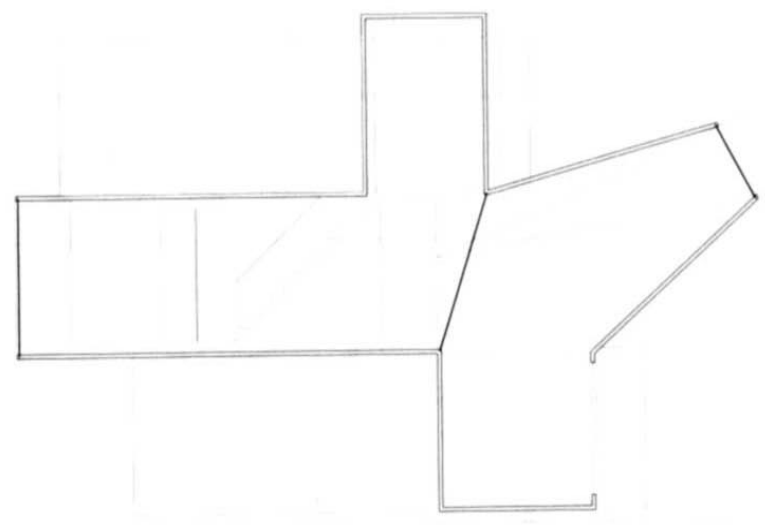
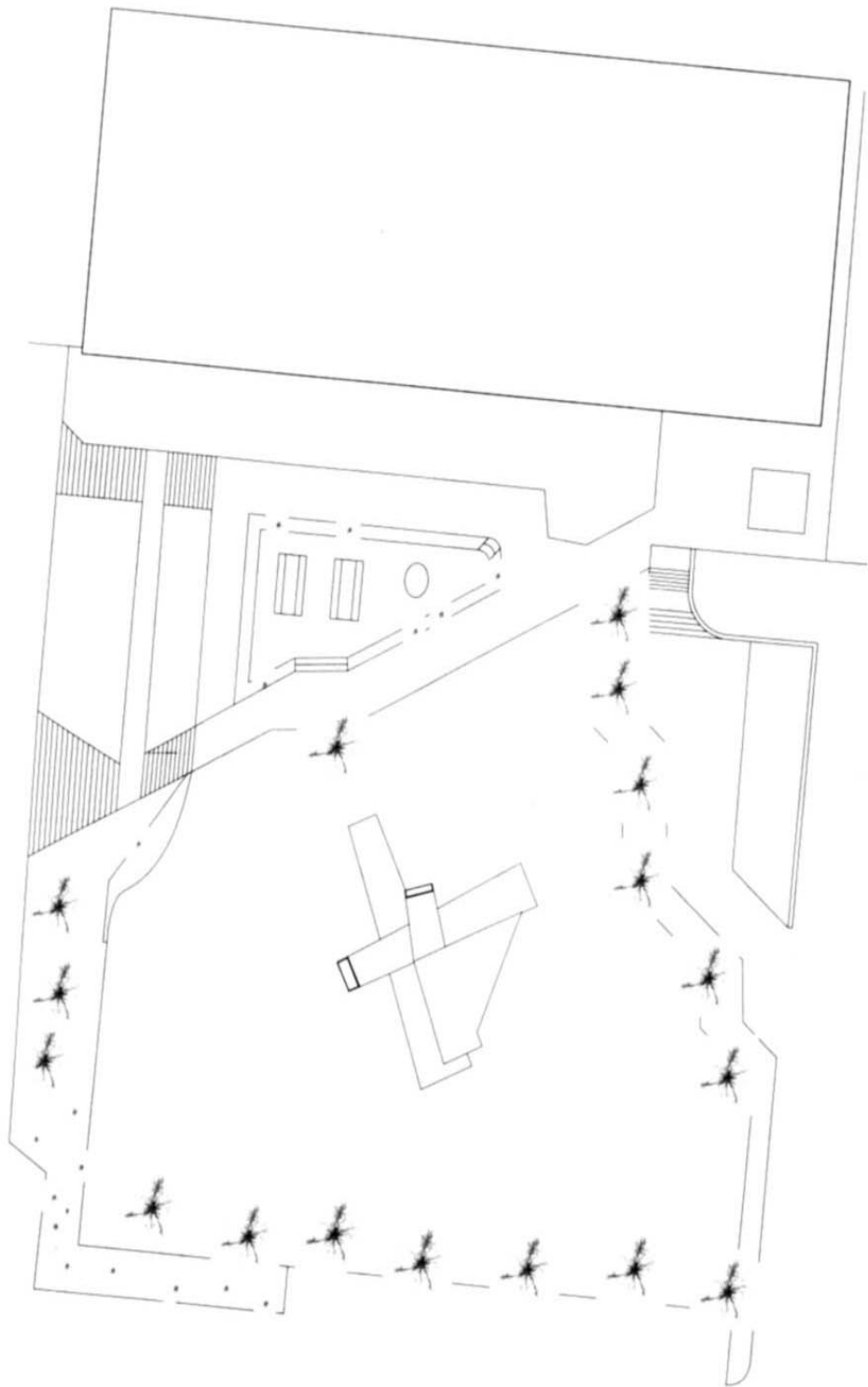
Räumliche Schleife
Student: Andreas Kuhn
1. Semester





Optisches Gerät
Student: Martin Janser
1. Semester





Alptransit Besucherzentrum Erstfeld
Student: Marco Knüsel
2. Semester

